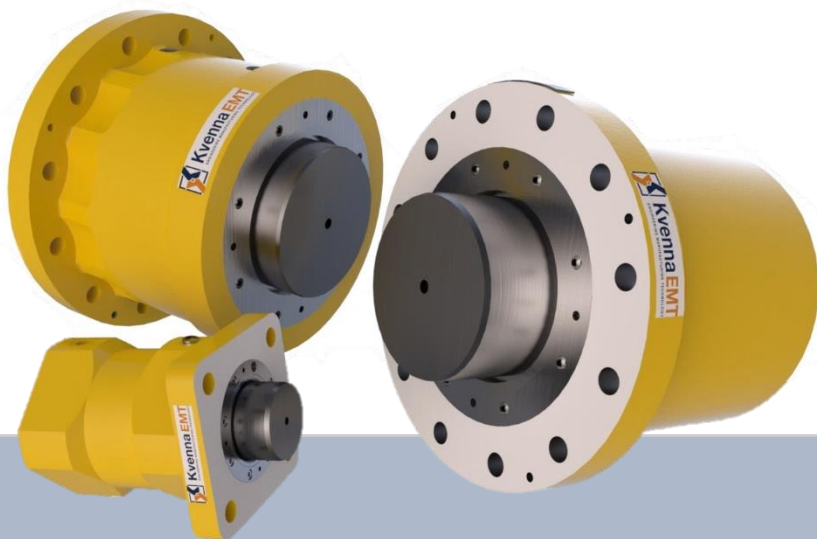




Kvenna EMT
ENGINEERING MANUFACTURING TECHNOLOGY

HYDRAULIC LEVELING JACKS



WHO WE ARE

Kvenna EMT supplies services within engineering, manufacturing, assembly and testing for subsea, marine and power projects all over the world.

We have a range of our own-developed products which includes Soft Landing Cylinders, Levelling Jacks, Subsea Torque Tools, etc.

VISIT

Kjøpmannsgata 23 | 6005 Ålesund
NORWAY

CONTACT

☎ (+47) 70 10 11 00
✉ kvennaemt@kvennaemt.com
🏠 www.kvennaemt.com

📘 📷 🌐 Kvenna EMT

DESCRIPTION OF HYDRAULIC LEVELING JACKS

Designed for temporary elevation of subsea equipment and structures. Robust and compact hydraulic cylinders for reliable leveling for example in a tie in and connection operation.



Kvenna EMT
ENGINEERING MANUFACTURING TECHNOLOGY



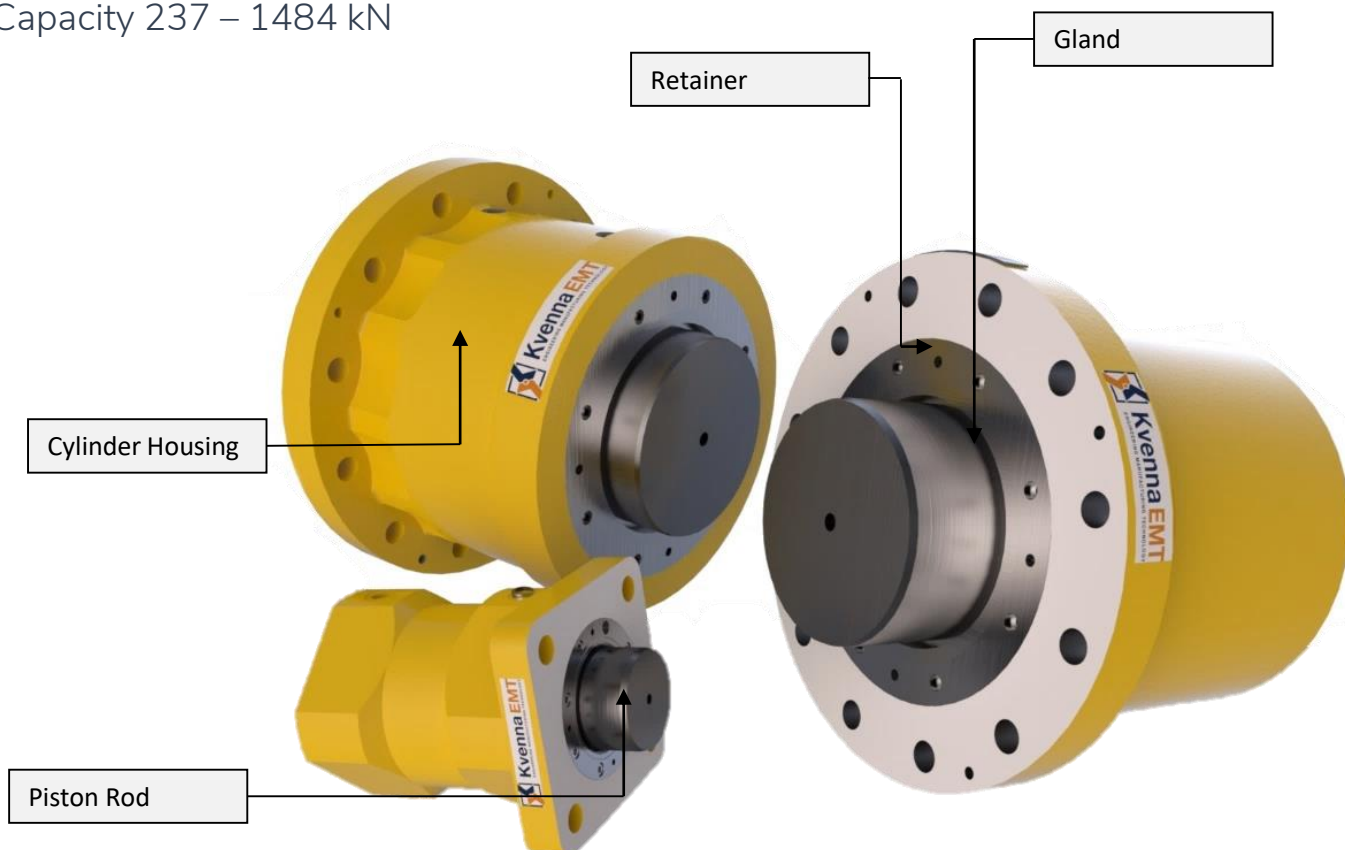
KVENNA EMT HYDRAULIC LEVELING CYLINDER– K-HLJ 119/100™/K-HLJ 300/200™ /K-HLJ 300/105™

Design benefits:

- Reduction of alignment forces
- Cost effective
- Compact design

Typical technical data:

- Design Water depth: 3000 m
- Stroke length 100 – 200mm
- Capacity 237 – 1484 kN

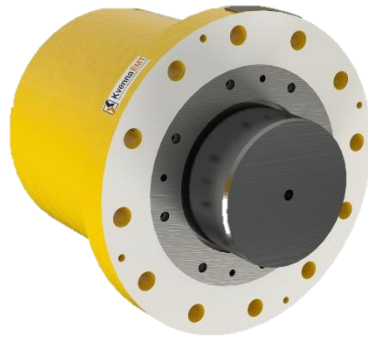




Kvenna EMT
ENGINEERING MANUFACTURING TECHNOLOGY



CHARACTERISTIC DATA:



K-HLJ 119/100™

Dimension

Length (locked position)	263 mm
Flange dimensions	185 x 185 mm
Cylinder OD	Ø 174 mm
Piston OD	Ø 119 mm
Weight	34 kg

Design

Depth	3000 m
Stroke Length	100 mm
Design Piston Force	237.5 kN
Housing material	S355
Piston material	S165M

K-HLJ 300/200™

Dimension

Length (locked position)	464 mm
Flange dimensions	Ø 450 mm
Cylinder OD	Ø 360 mm
Piston OD	Ø 300 mm
Weight	272 kg

Design

Depth	3000 m
Stroke Length	200 mm
Design Piston Force	1484.4 kN
Housing material	34CrNiMo6
Piston material	S165M

K-HLJ 300/105™

Dimension

Length (locked position)	330 mm
Flange dimensions	Ø 450 mm
Cylinder OD	Ø 360 mm
Piston OD	Ø 300 mm
Weight	225 kg

Design

Depth	3000 m
Stroke Length	105 mm
Design Piston Force	1484.4 kN
Housing material	34CrNiMo6
Piston material	S165M